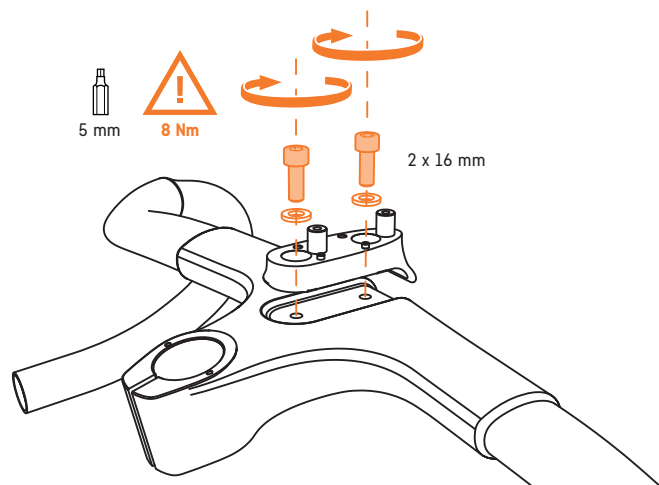
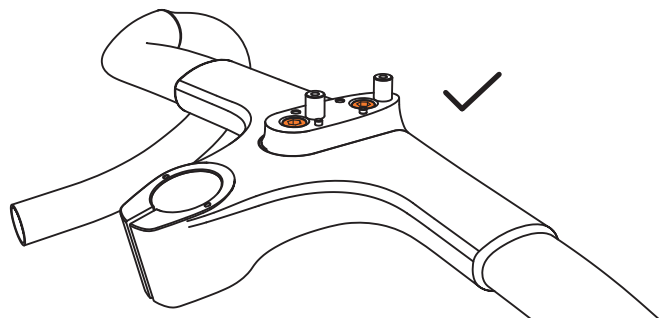


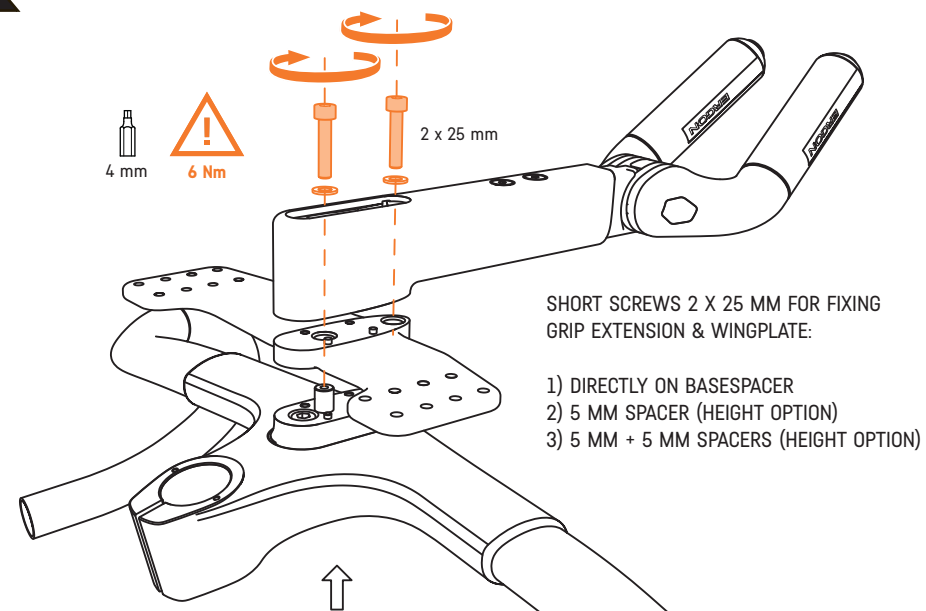
1



2



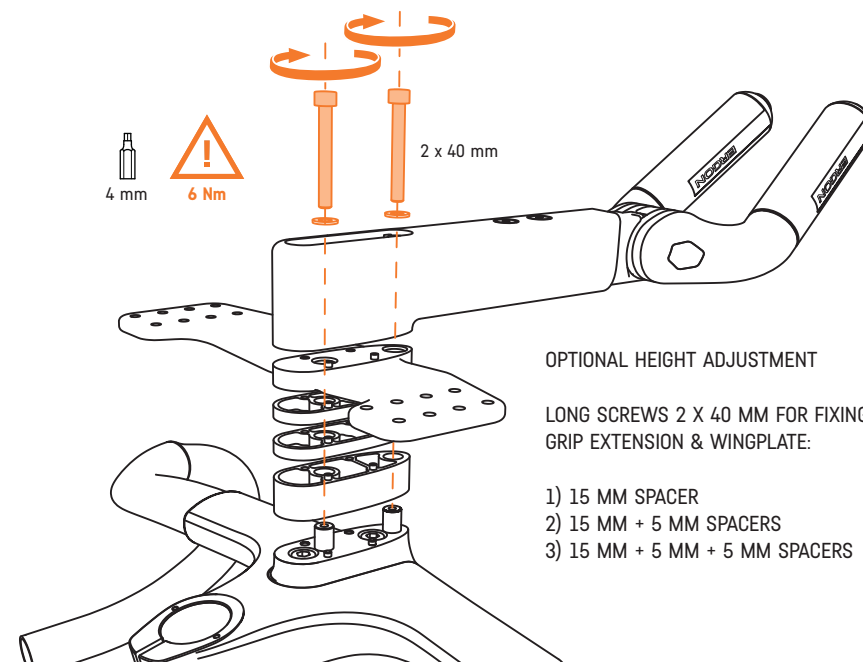
3



SHORT SCREWS 2 X 25 MM FOR FIXING GRIP EXTENSION & WINGPLATE:

- 1) DIRECTLY ON BASESPACER
- 2) 5 MM SPACER (HEIGHT OPTION)
- 3) 5 MM + 5 MM SPACERS (HEIGHT OPTION)

CHOOSE THE RIGHT SCREW LENGTH  
DEPENDING ON YOUR PREFERRED HEIGHT

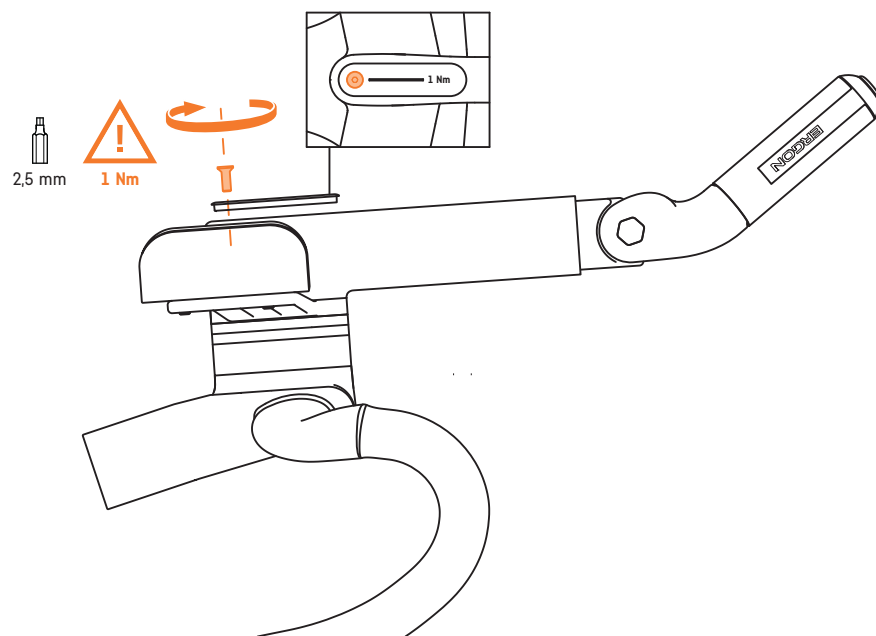


OPTIONAL HEIGHT ADJUSTMENT

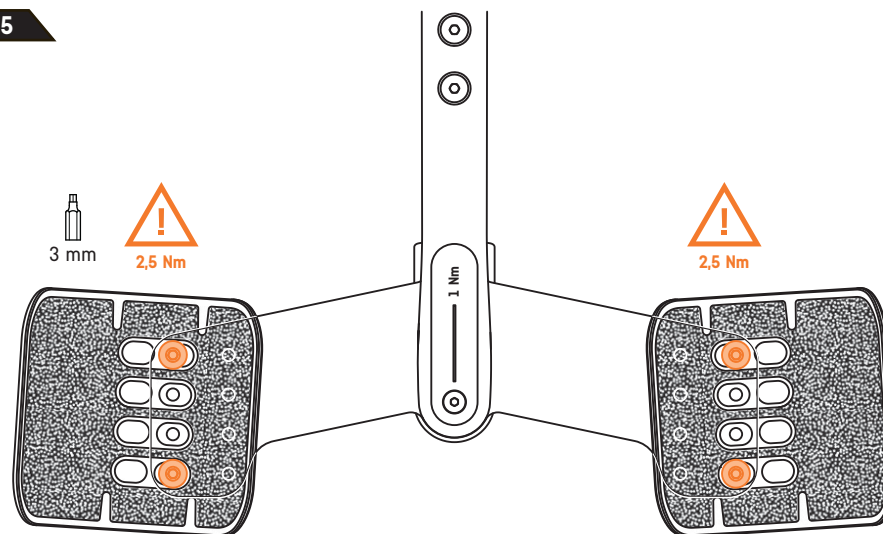
LONG SCREWS 2 X 40 MM FOR FIXING GRIP EXTENSION & WINGPLATE:

- 1) 15 MM SPACER
- 2) 15 MM + 5 MM SPACERS
- 3) 15 MM + 5 MM + 5 MM SPACERS

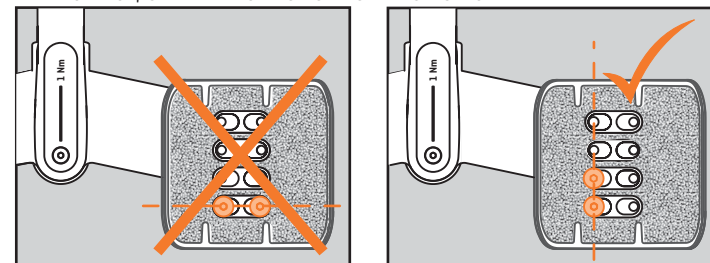
4



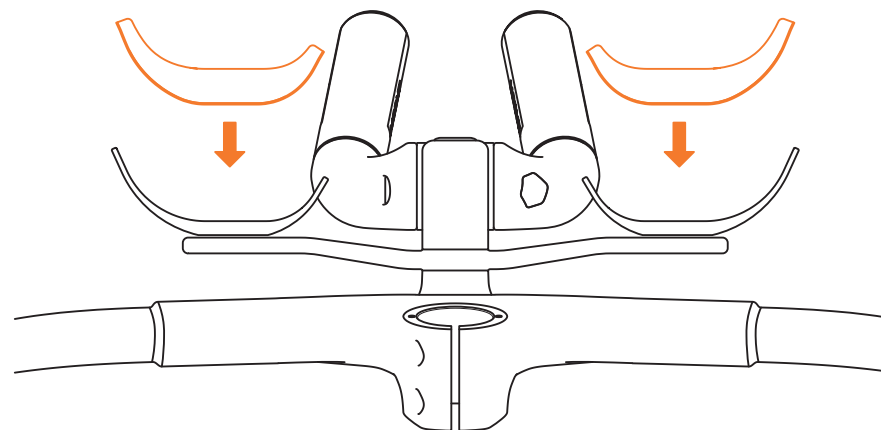
5



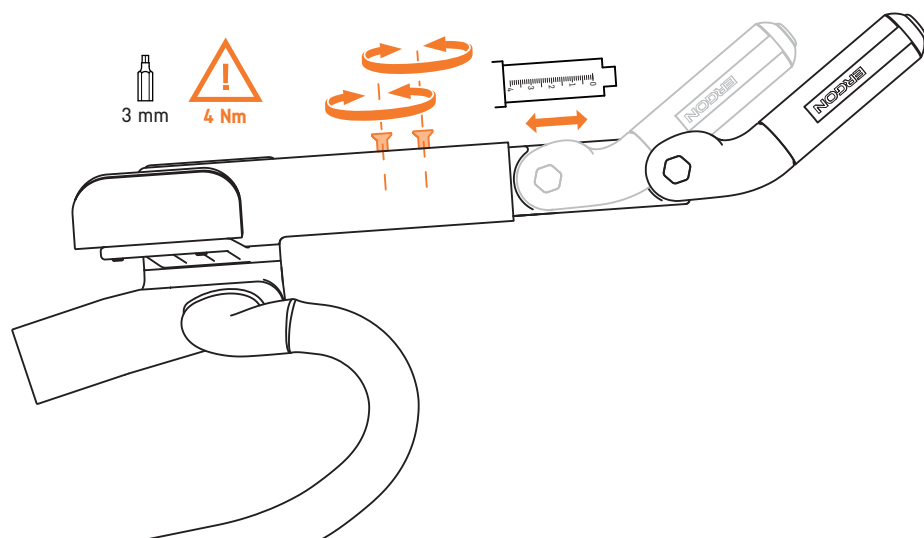
ALWAYS USE TWO SCREWS PER ARMSHELL AND MAKE SURE THEY ARE ALWAYS IN THE SAME VERTICAL ROW. THEY CAN BE MOUNTED ON TOP OF THE OTHER WITHOUT ANY DISTANCE, OR WITH A GAP OF ONE OR TWO HOLES.



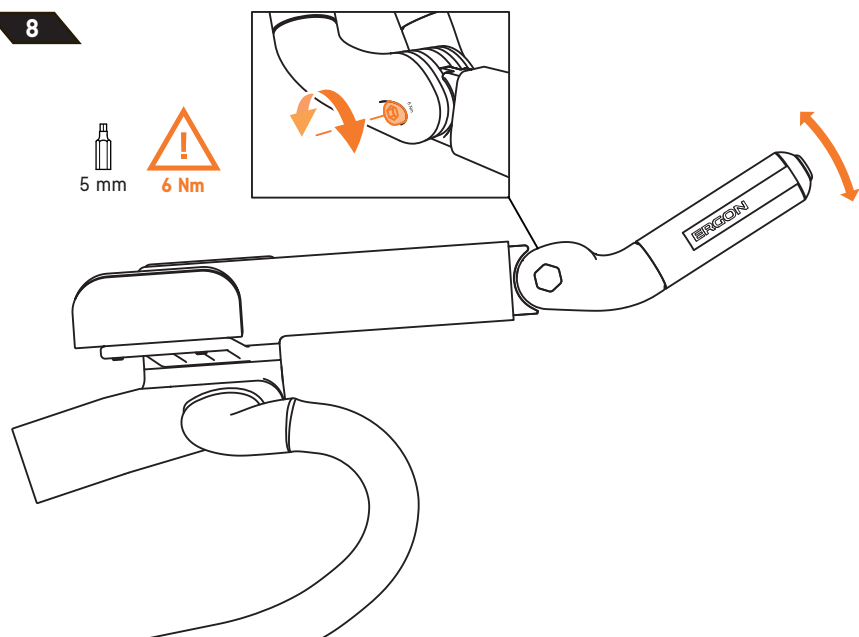
6



7



8



# QUICK START GUIDE

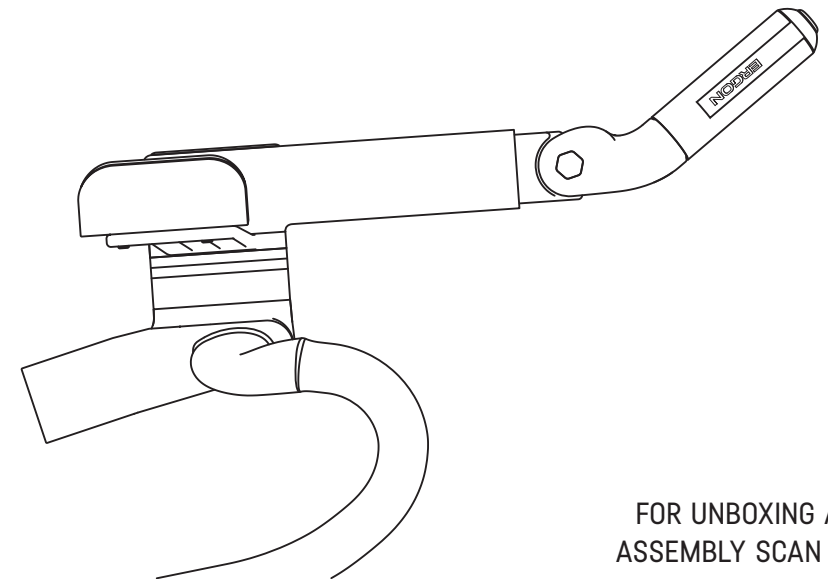
## CANYON GRAIL EXTENSION

IMPORTANT!  
READ THESE INSTRUCTIONS CAREFULLY BEFORE FIRST  
USE AND KEEP THEM FOR FUTURE REFERENCE.



FOR THE UNITED STATES OF AMERICA:  
**CANYON BICYCLES USA INC.**  
5600 AVENIDA ENCINAS, SUITE 180,  
CARLSBAD, CA 92008,  
(833) 226-9661,  
[WWW.CANYON.COM](http://WWW.CANYON.COM)

FOR ALL OTHER COUNTRIES:  
**CANYON BICYCLES GMBH**  
KARL-TESCHE-STRASSE 12,  
D-56073 KOBLENZ,  
TEL: +49 (0)261 9490 3000,  
[WWW.CANYON.COM](http://WWW.CANYON.COM)



FOR UNBOXING AND  
ASSEMBLY SCAN HERE



VERSION: 27.07.23 | 053-V01

**CANYON**